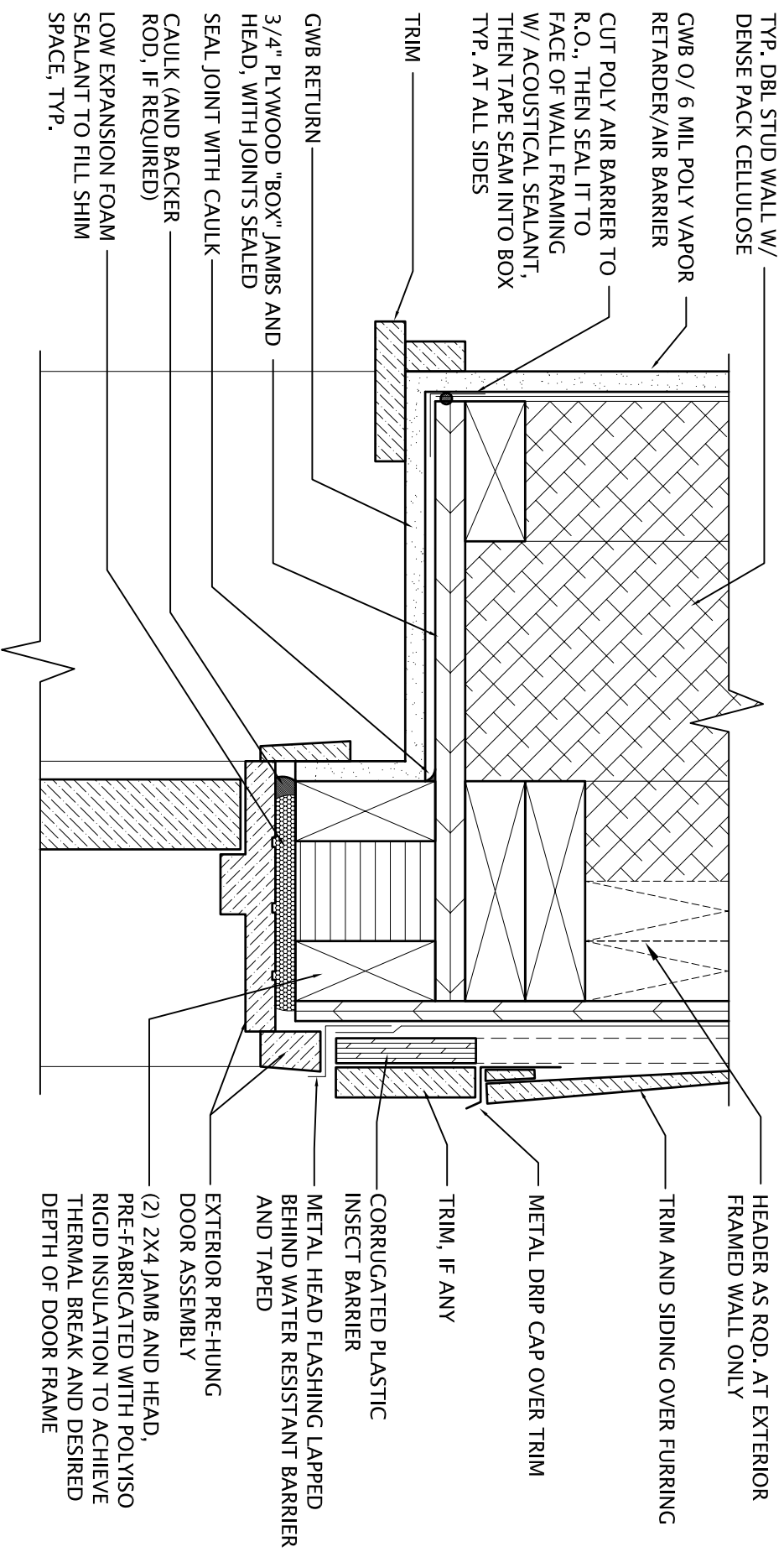


Note: This detail was developed to meet the requirements of a specific set of design parameters in a cold/wet climate. Variables such as insulation levels, regional building requirements and contractor preferences may render this detail not applicable to all conditions or situations.



Double Stud Wall w/ Furred Siding: Door Head Detail

Wagner Zaun

ARCHITECTURE

17 N. Lake Avenue
Duluth, MN 55802

218-733-0690

24

www.wagnerzaun.com

