

GARAGE  
w/ APT. ABOVE

30' PERM  
SETBACK

42"

24"

30"

10' SIDE  
SETBACKS

12"

NEW 2 STORY  
RESIDENCE

36"

40' FRONT  
SETBACK

9"

9"

42"

6"

9"

9"

# SEVILLE RESIDENCE

BARLEY-PEIFFER ARCHITECTS

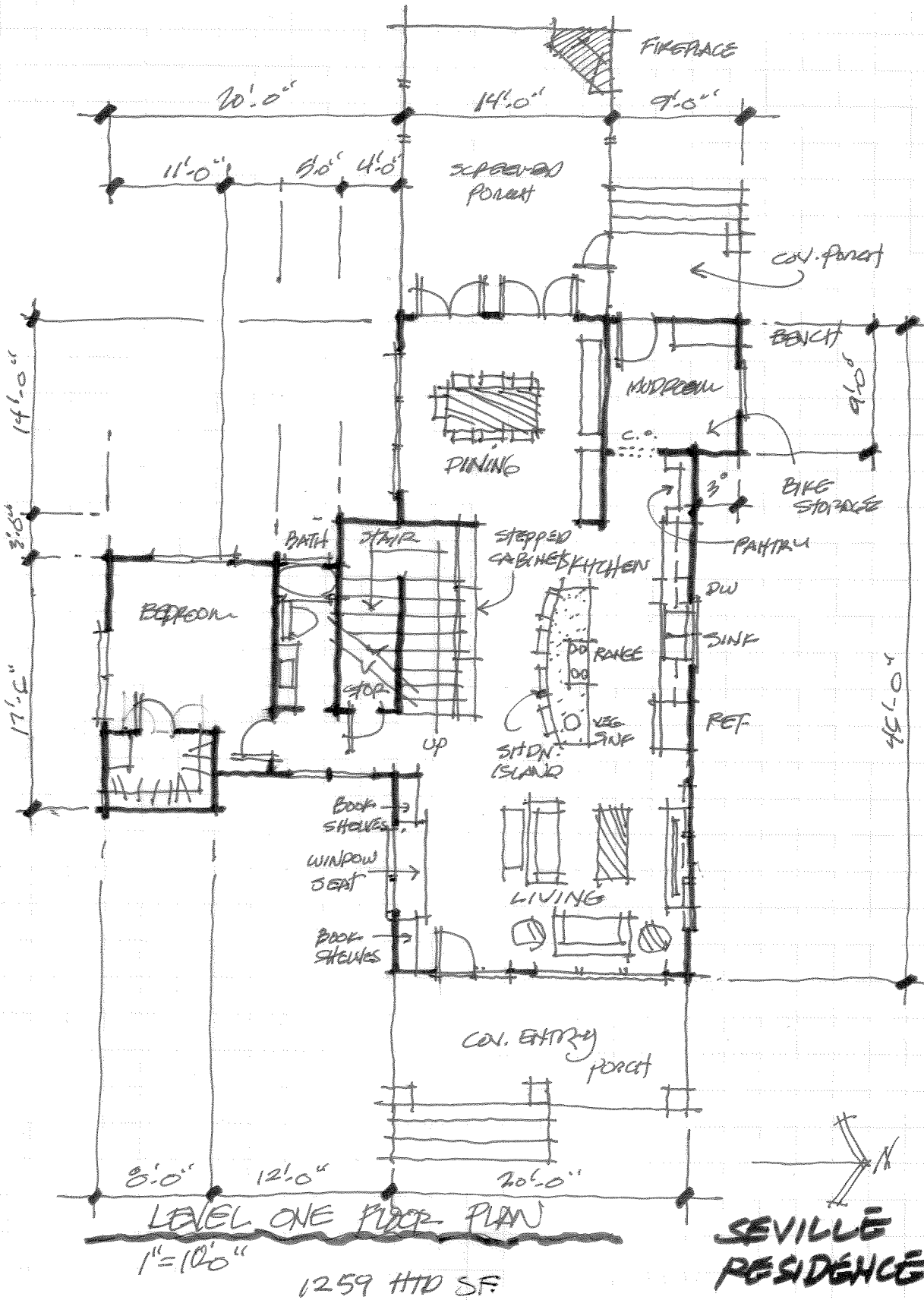


## SHE PLAN

1" = 20'

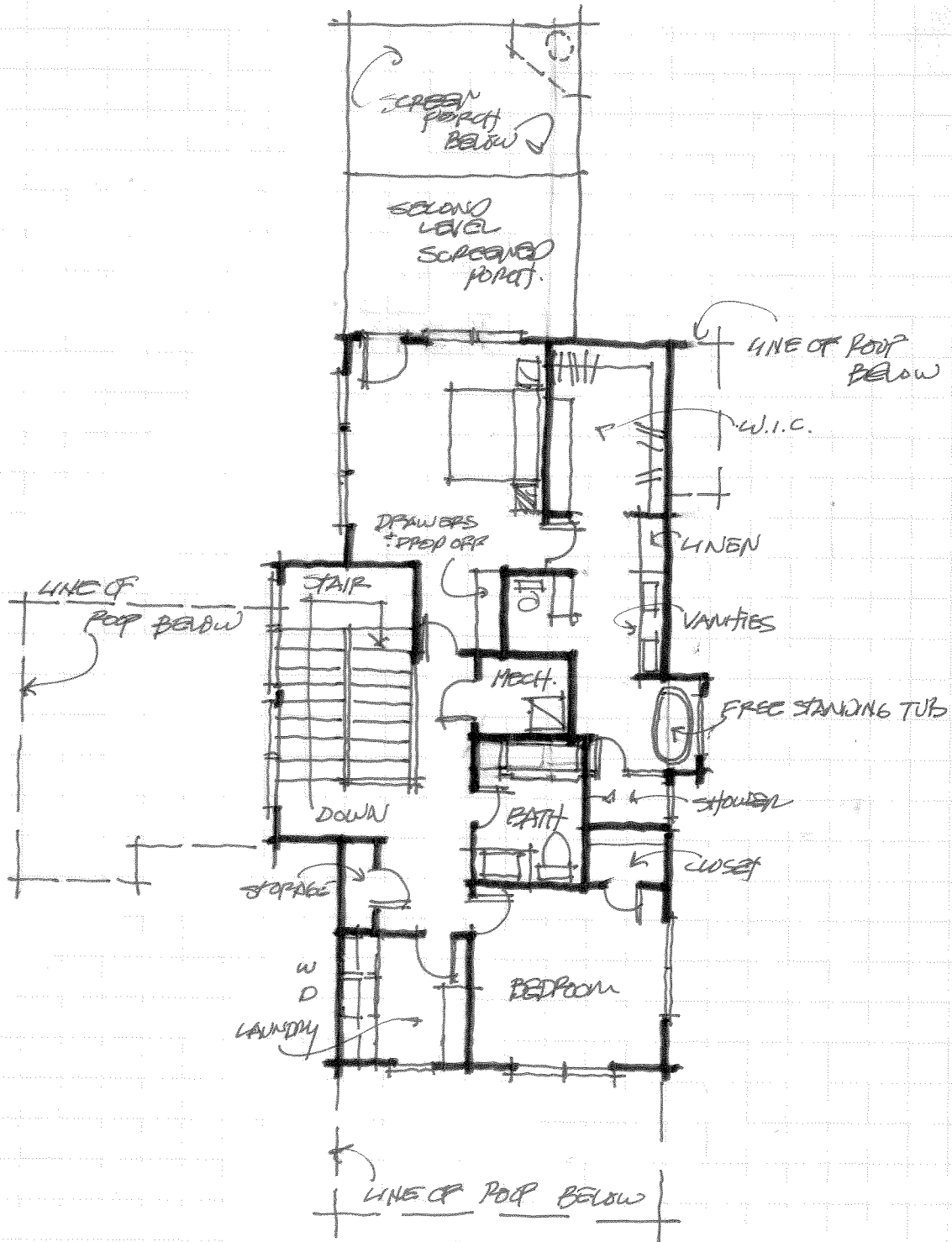
# Barley & Pfeiffer Architects

Comprehensive Sustainable Architecture, Interiors and Consulting




# Barley & Pfeiffer Architects

Comprehensive Sustainable Architecture, Interiors and Consulting



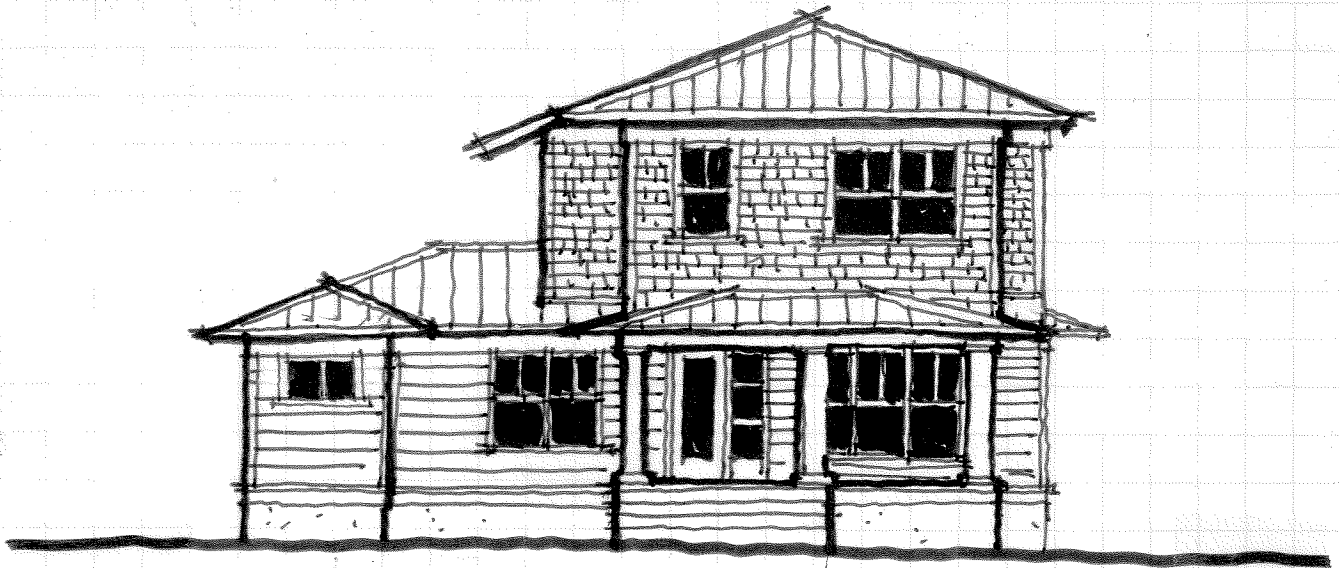
LEVEL 2 FLOOR PLAN

SCALE 1"=10'-0" 984 STD SF.

  
**SEVILLE  
RESIDENCE**

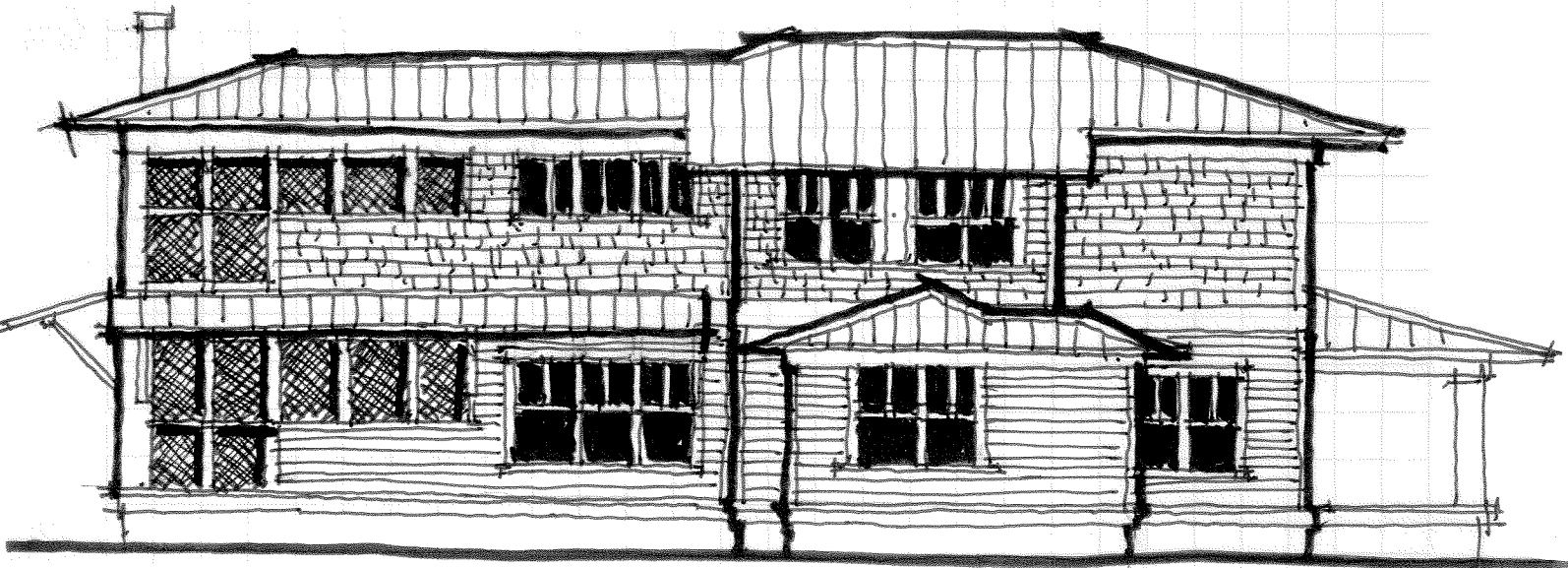
# Barley & Pfeiffer Architects

Comprehensive Sustainable Architecture, Interiors and Consulting



EAST / FRONT

1" = 10'-0"

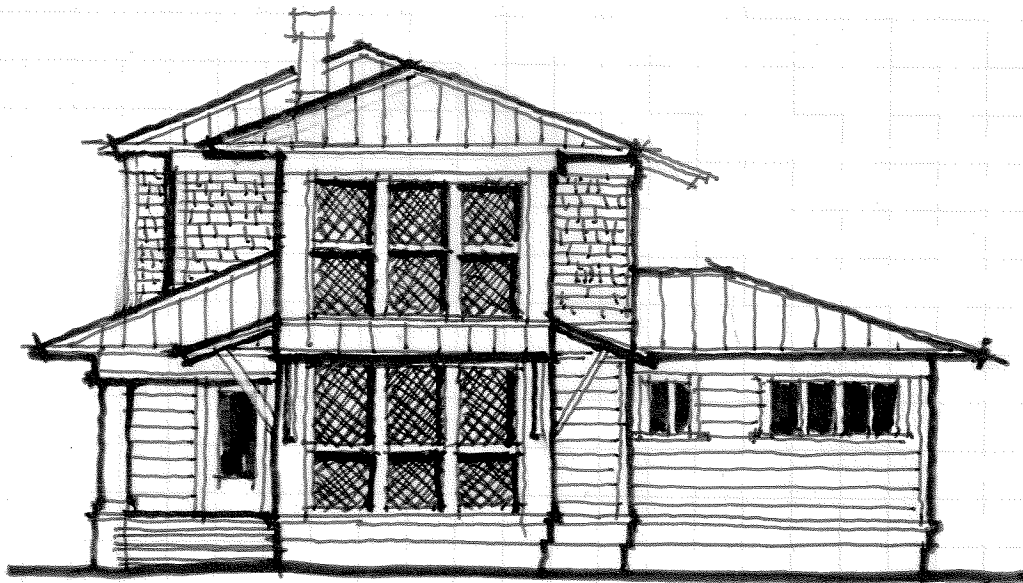


SOUTH

1" = 10'-0"

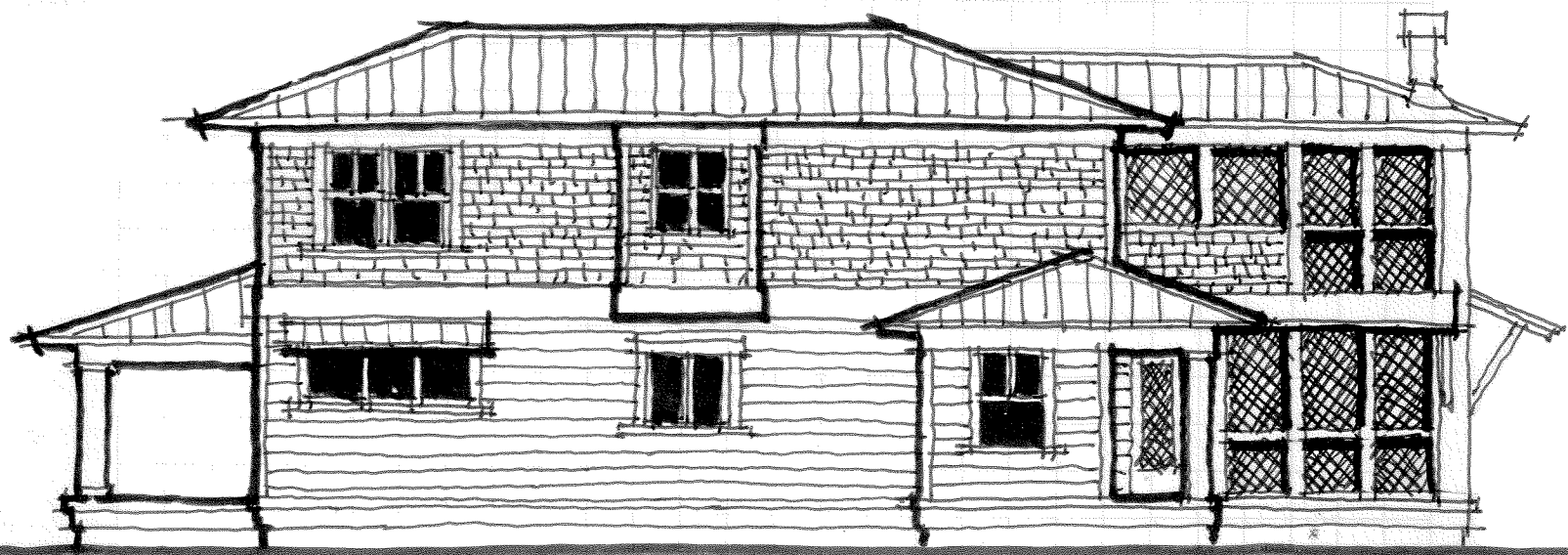
# Barley & Pfeiffer Architects

Comprehensive Sustainable Architecture, Interiors and Consulting



WEST (REAR)

1" = 10'-0"

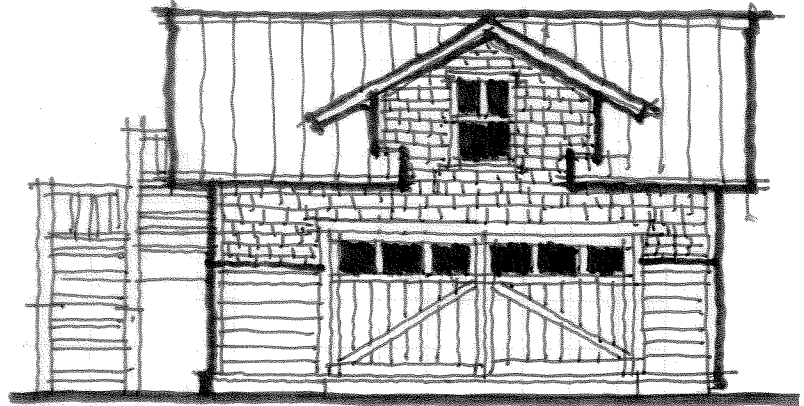
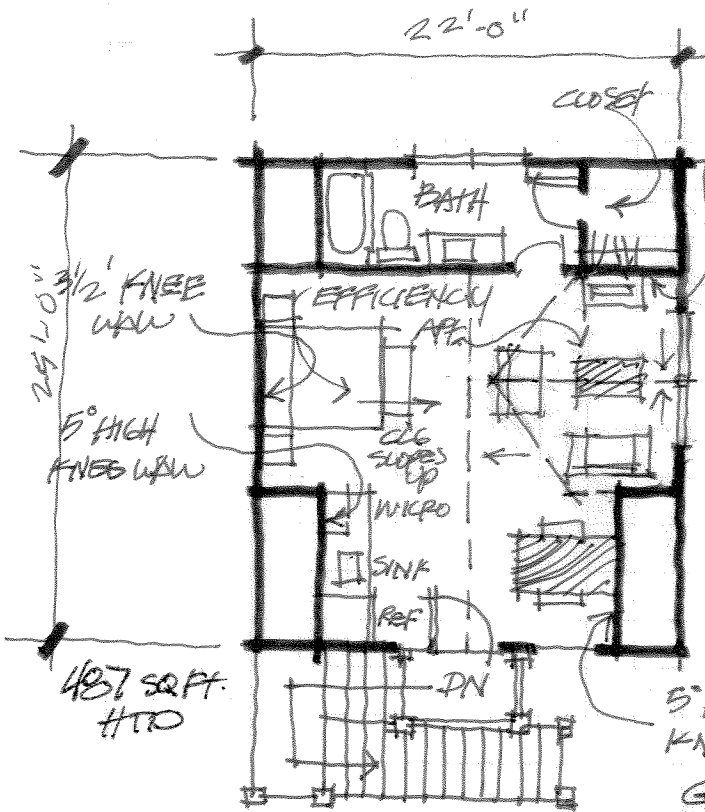


NORTH

1" = 10'-0"

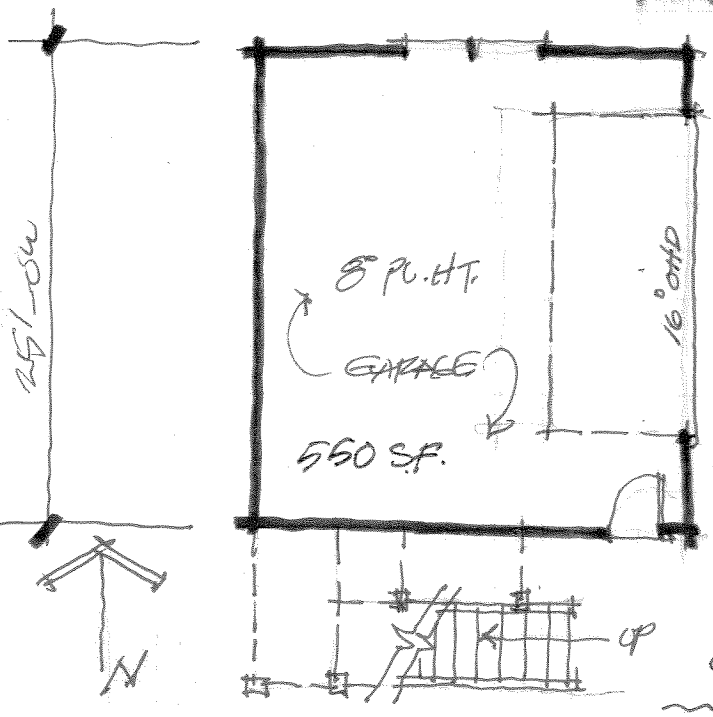
# Barley & Pfeiffer Architects

Comprehensive Sustainable Architecture, Interiors and Consulting



GARAGE/APT. 1"=10'-0"  
EAST ELEVATION

GARAGE/APT. LEVEL 2  
1"=10'-0"



1"=10'-0"

GARAGE/APT. LEVEL 1

# Barley & Pfeiffer Architects

Comprehensive Sustainable Architecture, Interiors and Consulting

FIRST FLOOR CONDITIONED AREA = 1259 sf.  
SECOND FLOOR CONDITIONED AREA = 984 sf.  

---

TOTAL CONDITIONED AREA = 2243 sf.

ENTRY PORCH = 220 sf.  
REAR PORCH = 81 sf.  
LOWER SCREEN PORCH = 280 sf.  
UPPER SCREEN PORCH = 140 sf.  

---

TOTAL UNCONDITIONED AREA = 721 sf.

TOTAL COVERED AREA = 2243 + 721  
= 2964 sf.

GARAGE: = 550 SF  
2ND LEVEL APT. = 487 SF. HTD.  
STAIR = 150 SF

---

TOTAL AT GARAGE/APT. = 1187 SF  
COVERED AREA